

Ditre Italia Products

2023

—

Tessuti *Fabrics*

CAL TB 117

DITRE
italia

CAT. U

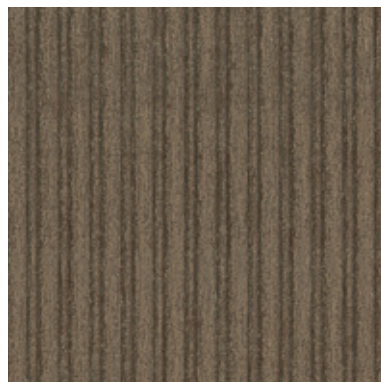
Unique



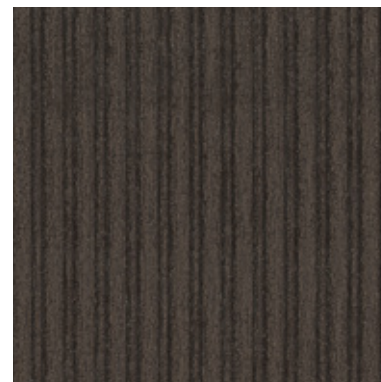
UNIQUE 101



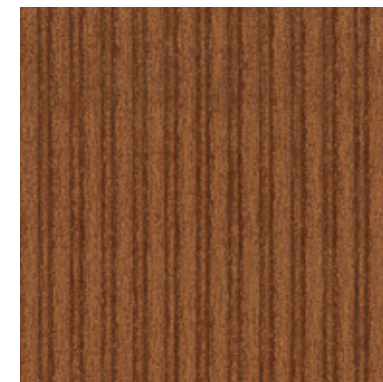
UNIQUE 102



UNIQUE 103



UNIQUE 104



UNIQUE 105



UNIQUE 106

INFORMAZIONI TECNICHE / TECHNICAL INFORMATION

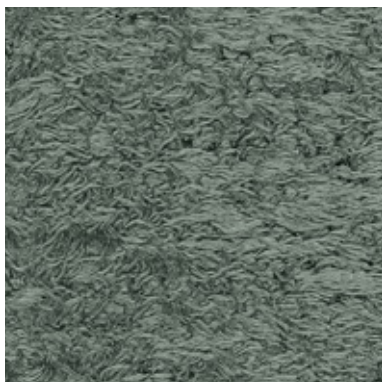
Composizione / composition	39% PL - 39% CO - 22%PC
Martindale / martindale	20.000 cicli/cycles
Pilling / Pilling	3/4

MANUTENZIONE / MAINTENANCE



CAT. U

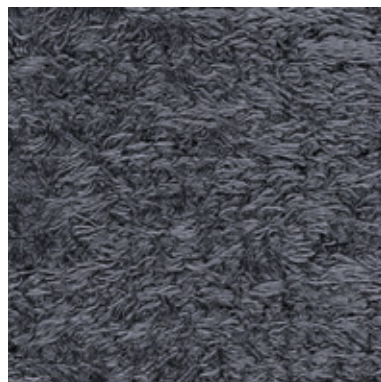
Uber



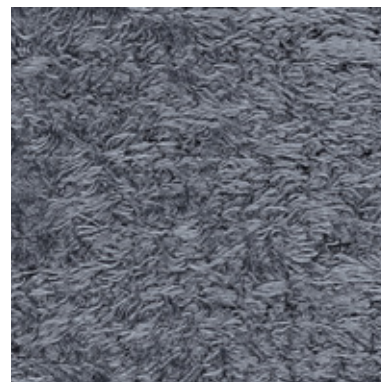
UBER 001



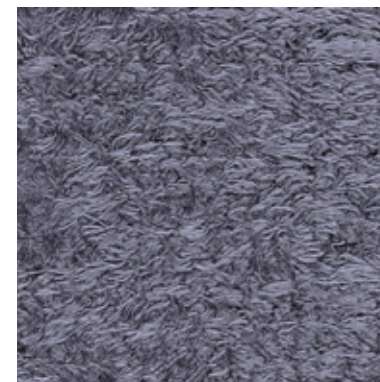
UBER 004



UBER 005



UBER 006



UBER 007



UBER 010



UBER 011



UBER 013



UBER 014

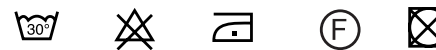


UBER 015

INFORMAZIONI TECNICHE / TECHNICAL INFORMATION

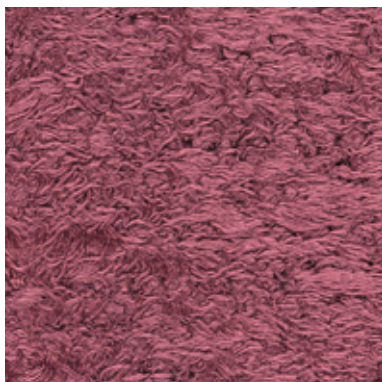
Composizione / composition	59% PC - 41% PL
Martindale / martindale	30.000 cicli/cycles
Pilling / Pilling	3/4

MANUTENZIONE / MAINTENANCE



CAT. U

Uber



UBER 016



UBER 017



UBER 021



UBER 023

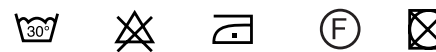


UBER 024

INFORMAZIONI TECNICHE / TECHNICAL INFORMATION

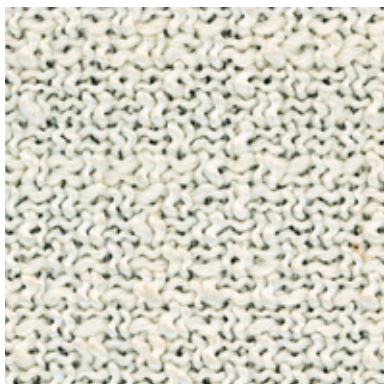
Composizione / composition	59% PC - 41% PL
Martindale / martindale	30.000 cicli/cycles
Pilling / Pilling	3/4

MANUTENZIONE / MAINTENANCE



CAT. T

Task



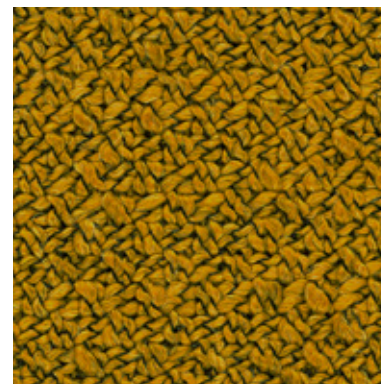
TASK 101



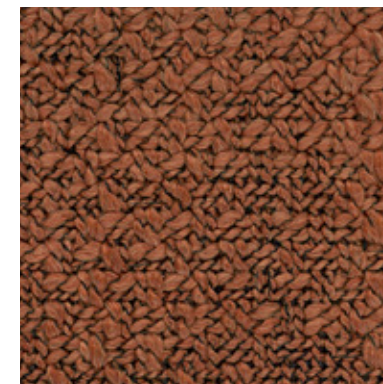
TASK 104



TASK 105



TASK 106



TASK 108



TASK 110



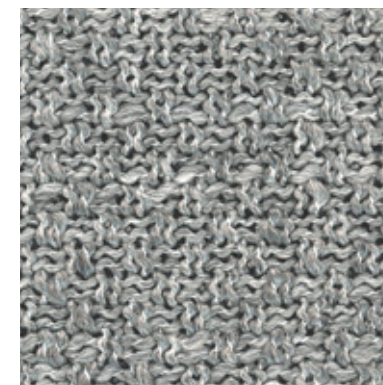
TASK 111



TASK 114



TASK 115

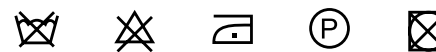


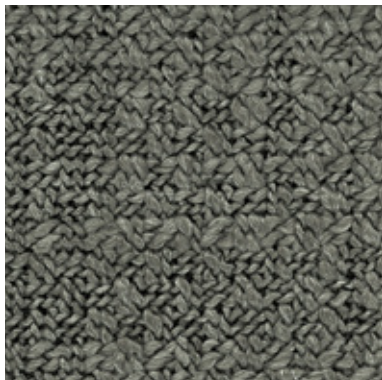
TASK 116

INFORMAZIONI TECNICHE / TECHNICAL INFORMATION

Composizione / composition	45% PC - 25% PL - 22% CO - 8% WO
Martindale / martindale	30.000 cicli/cycles
Pilling / Pilling	4

MANUTENZIONE / MAINTENANCE





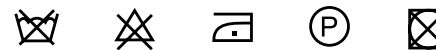
TASK 117



TASK 118

INFORMAZIONI TECNICHE / TECHNICAL INFORMATION

Composizione / composition	45% PC - 25% PL - 22% CO - 8% WO
Martindale / martindale	30.000 cicli/cycles
Pilling / Pilling	4

MANUTENZIONE / MAINTENANCE

CAT. T

Tallin



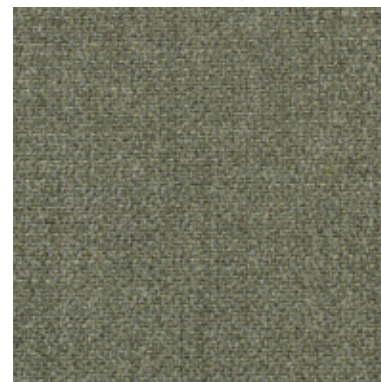
TALLIN 04



TALLIN 05



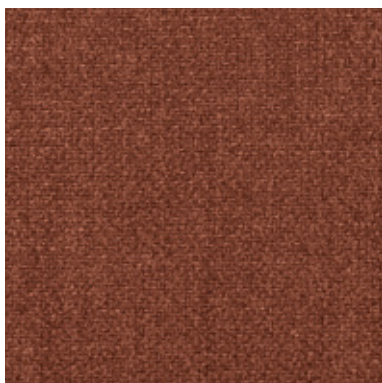
TALLIN 06



TALLIN 11



TALLIN 14



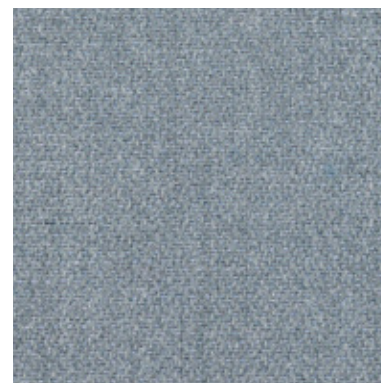
TALLIN 15



TALLIN 016



TALLIN 18



TALLIN 20

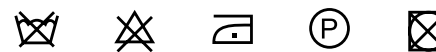


TALLIN 21

INFORMAZIONI TECNICHE / TECHNICAL INFORMATION

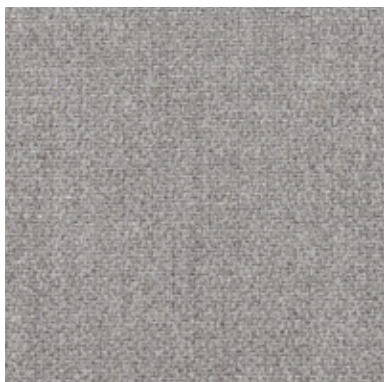
Composizione / composition	90% CO - 10% PL
Martindale / martindale	30.000 cicli/cycles
Pilling / Pilling	3/4

MANUTENZIONE / MAINTENANCE

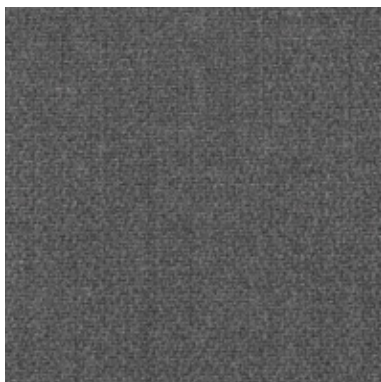


CAT. T

Tallin



TALLIN 22

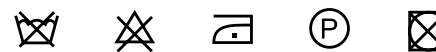


TALLIN 23

INFORMAZIONI TECNICHE / TECHNICAL INFORMATION

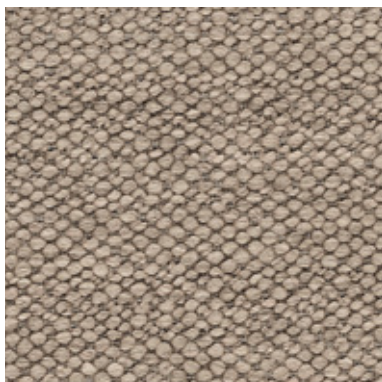
Composizione / composition	90% CO - 10% PL
Martindale / martindale	30.000 cicli/cycles
Pilling / Pilling	3/4

MANUTENZIONE / MAINTENANCE



CAT. T

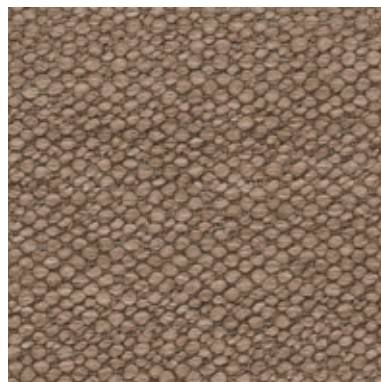
Tape



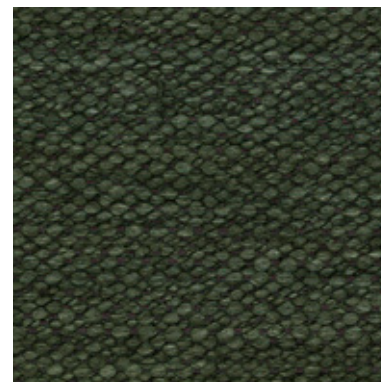
TAPE 304



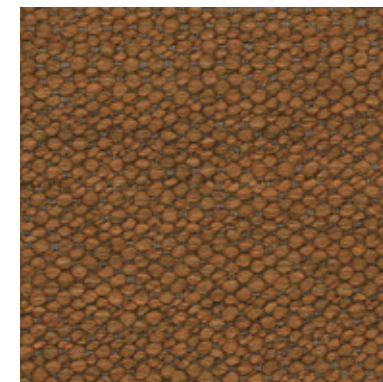
TAPE 305



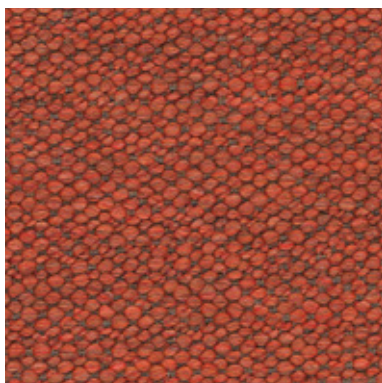
TAPE 306



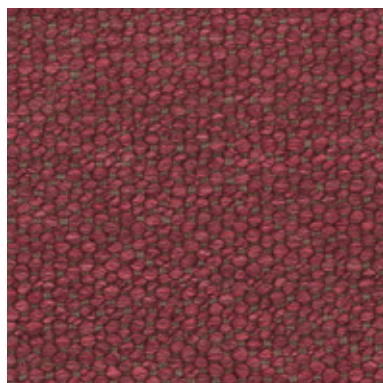
TAPE 311



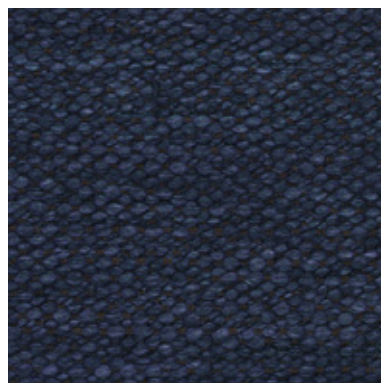
TAPE 314



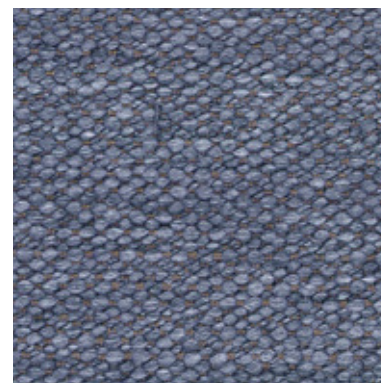
TAPE 315



TAPE 316



TAPE 318



TAPE 320

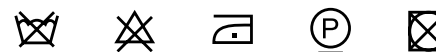


TAPE 321

INFORMAZIONI TECNICHE / TECHNICAL INFORMATION

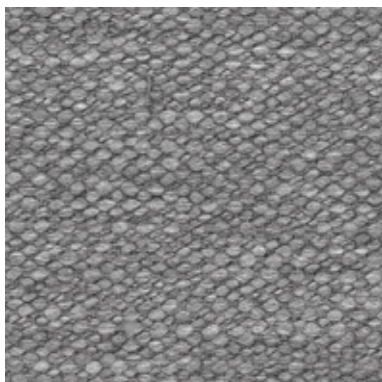
Composizione / composition	49% PC - 23% PL - 23% VI - 5% CO
Martindale / martindale	30.000 cicli/cycles
Pilling / Pilling	3/4

MANUTENZIONE / MAINTENANCE

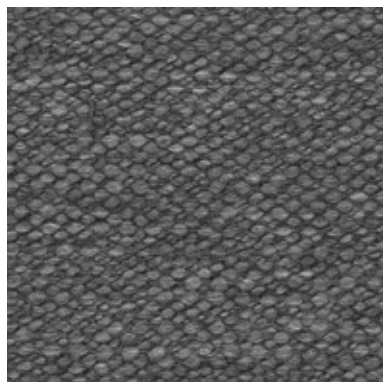


CAT. T

Tape



TAPE 322

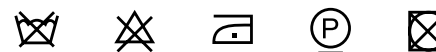


TAPE 323

INFORMAZIONI TECNICHE / TECHNICAL INFORMATION

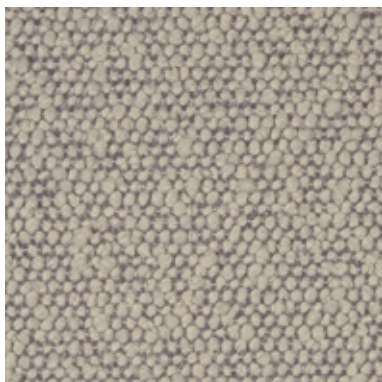
Composizione / composition	49% PC - 23% PL - 23% VI - 5% CO
Martindale / martindale	30.000 cicli/cycles
Pilling / Pilling	3/4

MANUTENZIONE / MAINTENANCE

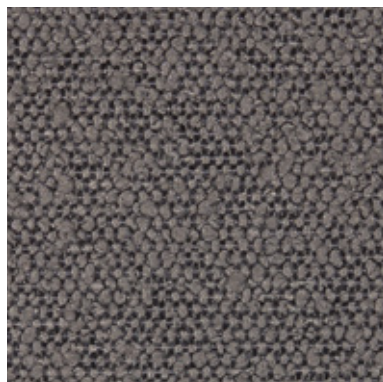


CAT. P

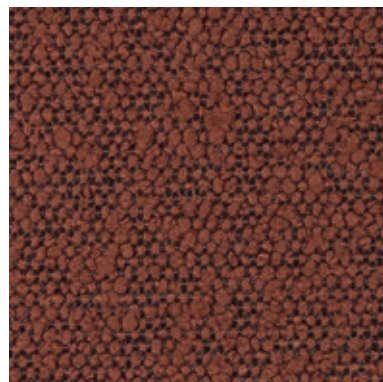
Princess



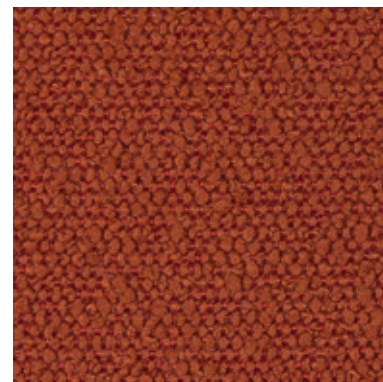
PRINCESS 901



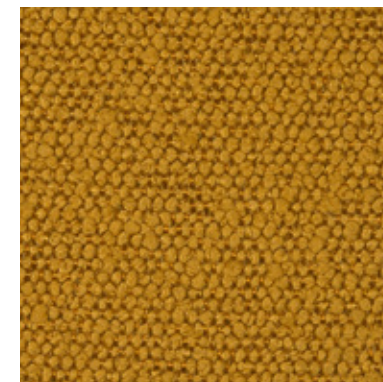
PRINCESS 101



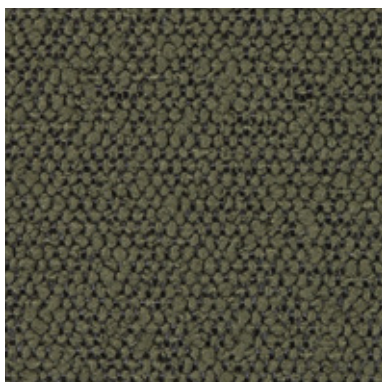
PRINCESS 300



PRINCESS 304



PRINCESS 400



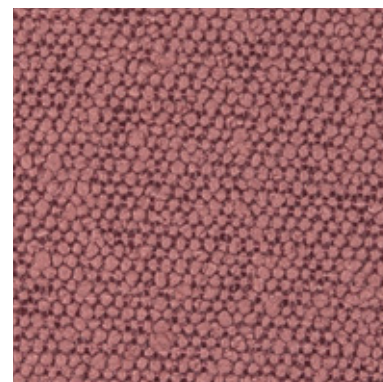
PRINCESS 502



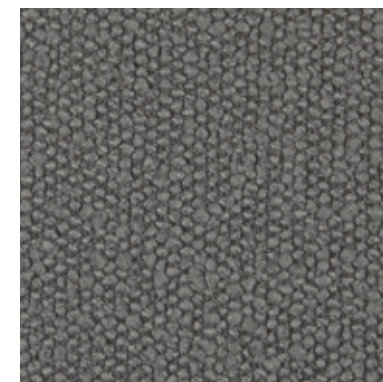
PRINCESS 600



PRINCESS 604



PRINCESS 705



PRINCESS 802

INFORMAZIONI TECNICHE / TECHNICAL INFORMATION

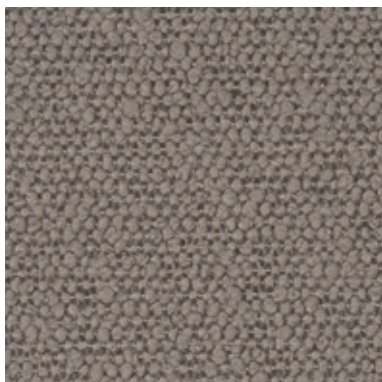
Composizione / composition	100% PLFR
Martindale / martindale	80.000 cicli/cycles
Pilling / Pilling	5

MANUTENZIONE / MAINTENANCE

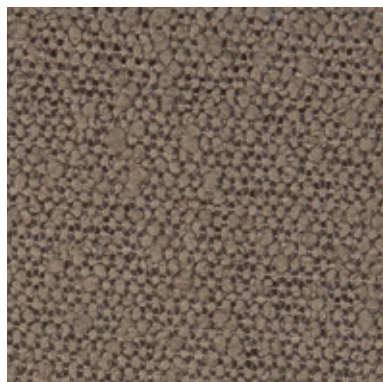


CAT. P

Princess



PRINCESS 803



PRINCESS 903

INFORMAZIONI TECNICHE / TECHNICAL INFORMATION

Composizione / composition	100% PLFR
Martindale / martindale	80.000 cicli/cycles
Pilling / Pilling	5

MANUTENZIONE / MAINTENANCE





POTTER 501



POTTER 503



POTTER 509



POTTER 510



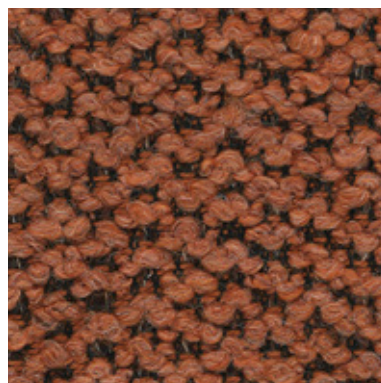
POTTER 512



POTTER 522



POTTER 524



POTTER 529



POTTER 530

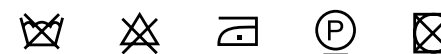


POTTER 539

INFORMAZIONI TECNICHE / TECHNICAL INFORMATION

Composizione / composition	34% PC - 24% CO - 14% WO - 12% VI - 12% PL - 4% LI
Martindale / martindale	30.000 cicli/cycles
Pilling / Pilling	4

MANUTENZIONE / MAINTENANCE





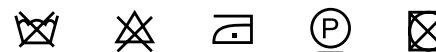
POTTER 540



POTTER 543

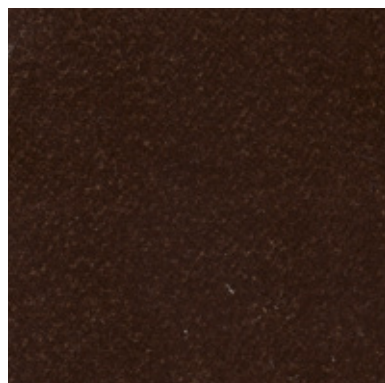
INFORMAZIONI TECNICHE / TECHNICAL INFORMATION

Composizione / composition	34% PC - 24% CO - 14% WO - 12% VI - 12% PL - 4% LI
Martindale / martindale	30.000 cicli/cycles
Pilling / Pilling	4

MANUTENZIONE / MAINTENANCE

CAT. P

Post



POST 055



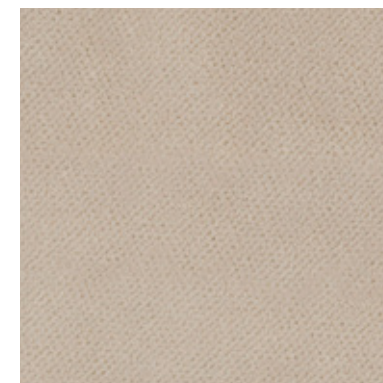
POST 058



POST 059



POST 061



POST 062



POST 071



POST 075



POST 076



POST 081



POST 086

INFORMAZIONI TECNICHE / TECHNICAL INFORMATION

Composizione / composition	100% PL
Martindale / martindale	60.000 cicli/cycles
Pilling / Pilling	5

MANUTENZIONE / MAINTENANCE



CAT. P

Post



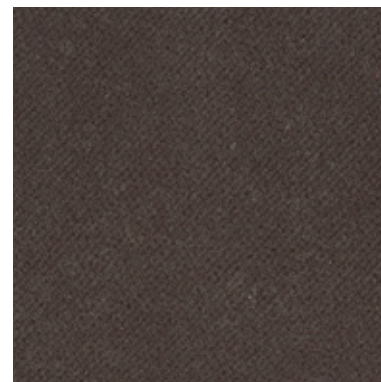
POST 089



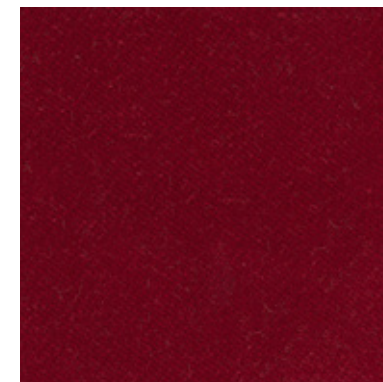
POST 093



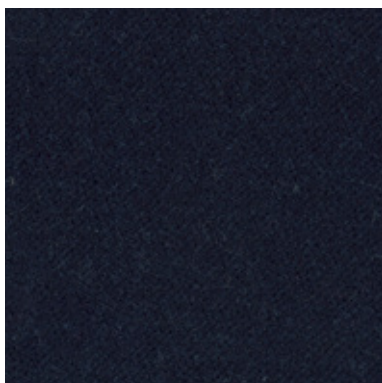
POST 094



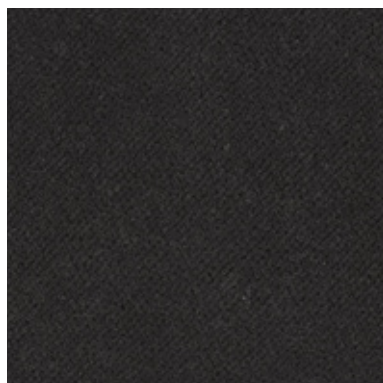
POST 096



POST 101



POST 203



POST 205



POST 208

INFORMAZIONI TECNICHE / TECHNICAL INFORMATION

Composizione / composition	100% PL
Martindale / martindale	60.000 cicli/cycles
Pilling / Pilling	5

MANUTENZIONE / MAINTENANCE

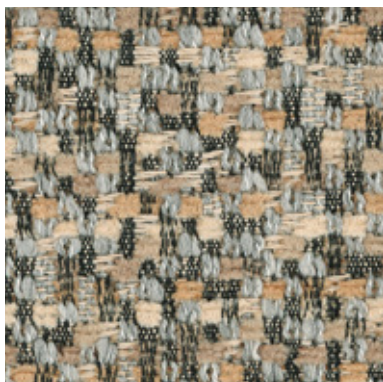


CAT. P

Positano



POSITANO 105



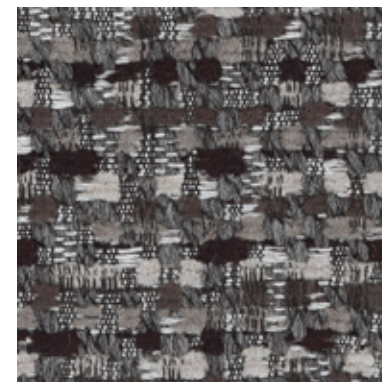
POSITANO 108



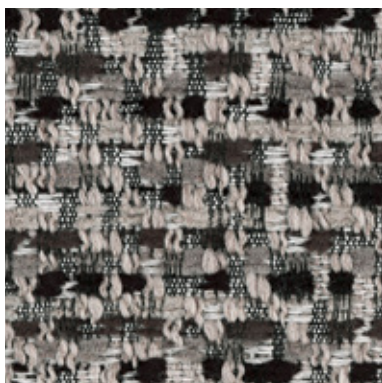
POSITANO 114



POSITANO 134



POSITANO 139



POSITANO 141

INFORMAZIONI TECNICHE / TECHNICAL INFORMATION

Composizione / composition	58% PVC - 14% PL 15% WO 13% CO
Martindale / martindale	20.000 cicli/cycles
Pilling / Pilling	5

MANUTENZIONE / MAINTENANCE

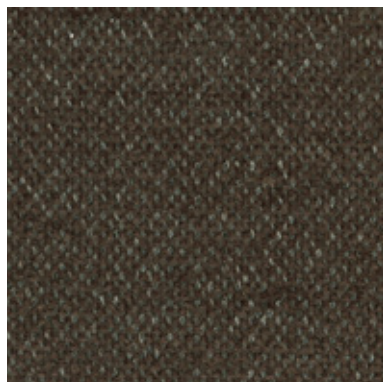


CAT. P

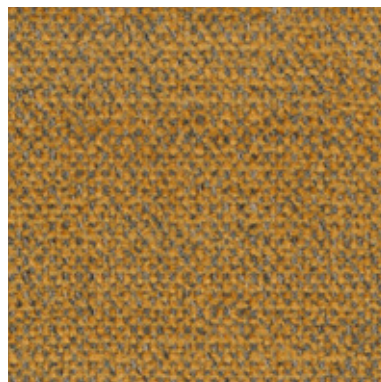
Petra



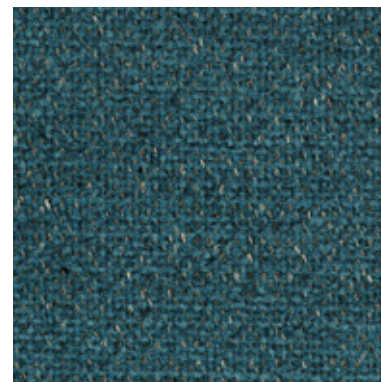
PETRA 002



PETRA 010



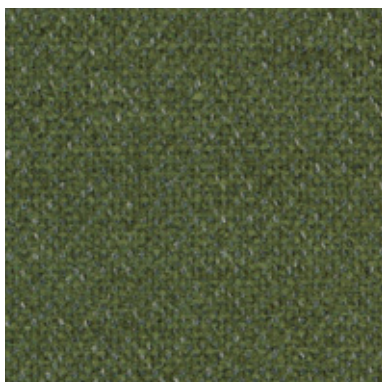
PETRA 014



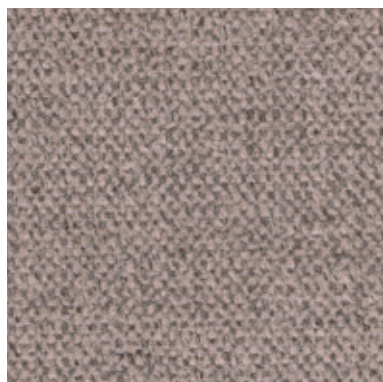
PETRA 020



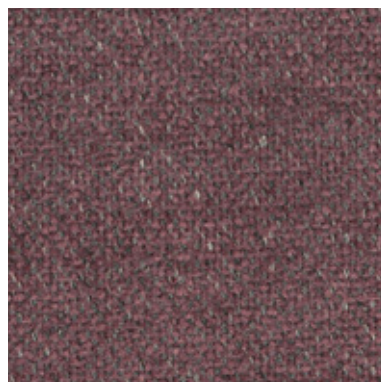
PETRA 022



PETRA 026



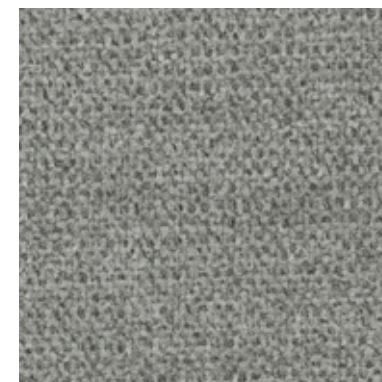
PETRA 029



PETRA 031



PETRA 036



PETRA 037

INFORMAZIONI TECNICHE / TECHNICAL INFORMATION

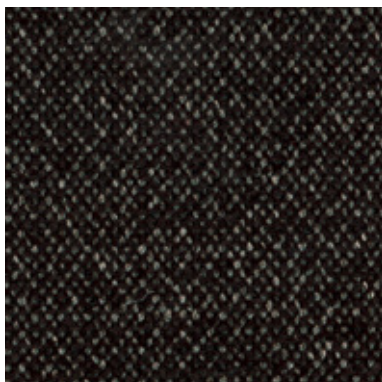
Composizione / composition	41% CO - 36% PL - 23% PC
Martindale / martindale	25.000 cicli/cycles
Pilling / Pilling	5

MANUTENZIONE / MAINTENANCE



CAT. P

Petra



PETRA 038



PETRA 040



PETRA 041

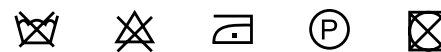


PETRA 042

INFORMAZIONI TECNICHE / TECHNICAL INFORMATION

Composizione / composition	41% CO - 36% PL - 23% PC
Martindale / martindale	25.000 cicli/cycles
Pilling / Pilling	5

MANUTENZIONE / MAINTENANCE



CAT. P

Peggy



PEGGY 25



PEGGY 27



PEGGY 102



PEGGY 110



PEGGY 111



PEGGY 116



PEGGY 117



PEGGY 121



PEGGY 201

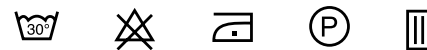


PEGGY 204

INFORMAZIONI TECNICHE / TECHNICAL INFORMATION

Composizione / composition	80% PL - 20% CO
Martindale / martindale	100.000 cicli/cycles
Pilling / Pilling	4

MANUTENZIONE / MAINTENANCE

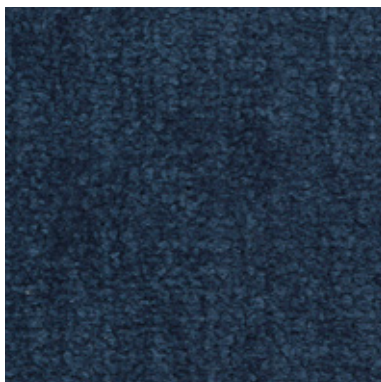


CAT. P

Peggy



PEGGY 207



PEGGY 209

INFORMAZIONI TECNICHE / TECHNICAL INFORMATION

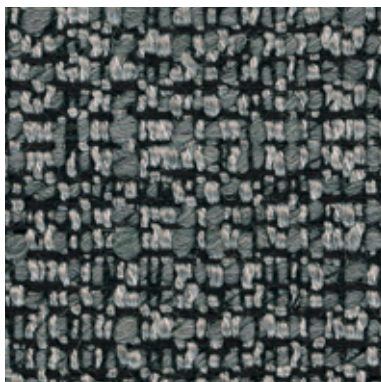
Composizione / composition	80% PL - 20% CO
Martindale / martindale	100.000 cicli/cycles
Pilling / Pilling	4

MANUTENZIONE / MAINTENANCE





PABLO 09



PABLO 13



PABLO 49



PABLO 50



PABLO 75



PABLO 96



PABLO 154



PABLO 163



PABLO 168

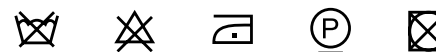


PABLO 171

INFORMAZIONI TECNICHE / TECHNICAL INFORMATION

Composizione / composition	23% WO - 48% PC - 12% PL - 7% CO - 10% NY
Martindale / martindale	24.000 cicli/cycles
Pilling / Pilling	4

MANUTENZIONE / MAINTENANCE



CAT. M

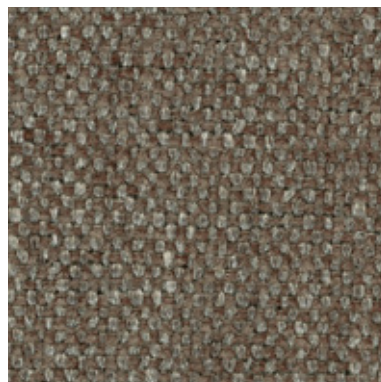
Meghan



MEGHAN 04



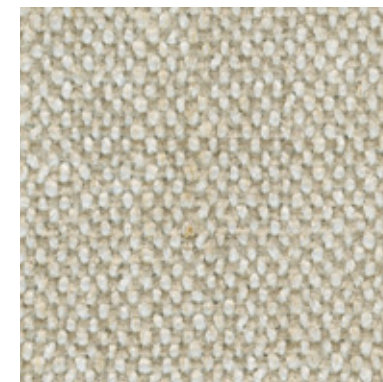
MEGHAN 13



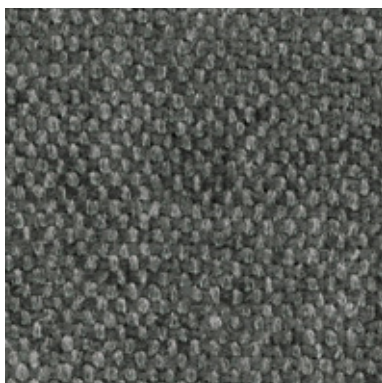
MEGHAN 19



MEGHAN 24



MEGHAN 56

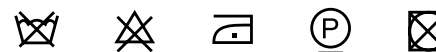


MEGHAN 63

INFORMAZIONI TECNICHE / TECHNICAL INFORMATION

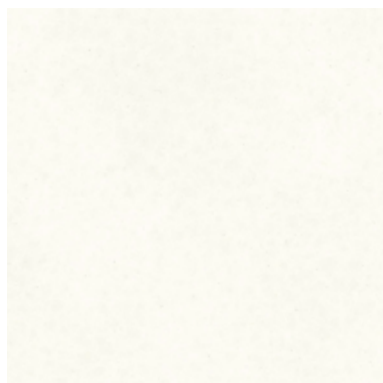
Composizione / composition	66% PC - 11% LI - 12% PL - 11% VI
Martindale / martindale	30.000 cicli/cycles
Pilling / Pilling	4

MANUTENZIONE / MAINTENANCE

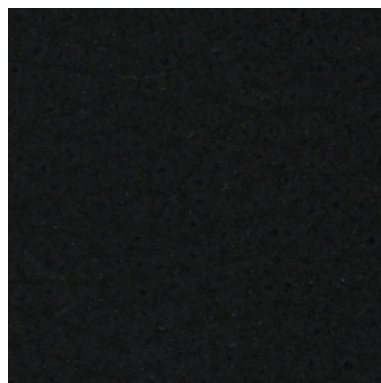




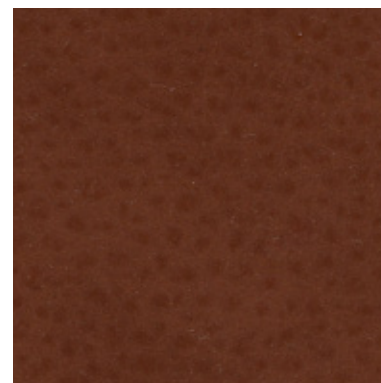
MAYA 000



MAYA 001



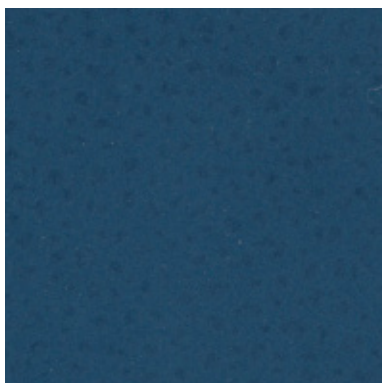
MAYA 016



MAYA 020



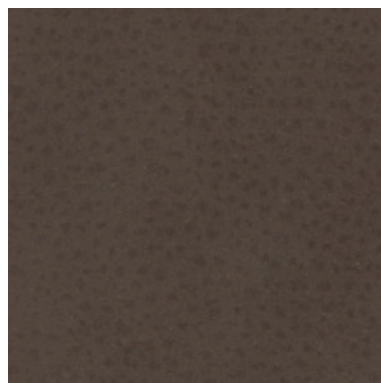
MAYA 100



MAYA 120



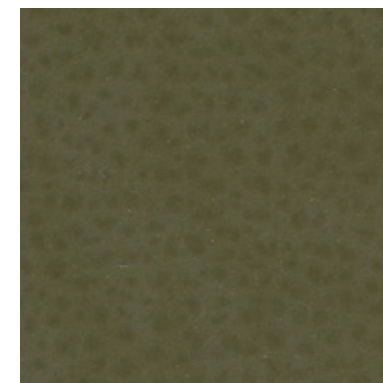
MAYA 175



MAYA 240



MAYA 275



MAYA 280

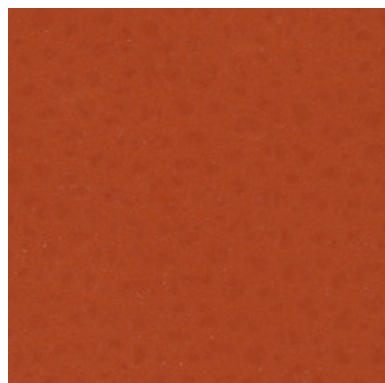
INFORMAZIONI TECNICHE / TECHNICAL INFORMATION

Composizione / composition	30% CO - 2% PU - 68% PVC
Martindale / martindale	>50.000 cicli/cycles
Pilling / Pilling	-

MANUTENZIONE / MAINTENANCE

SIMILPELLE CAT. M

Maya



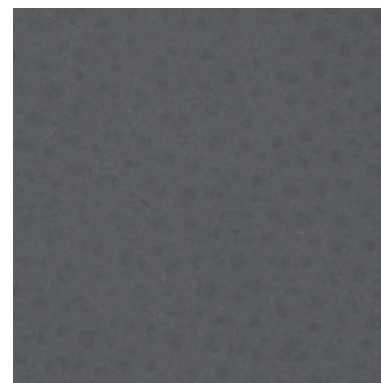
MAYA 410



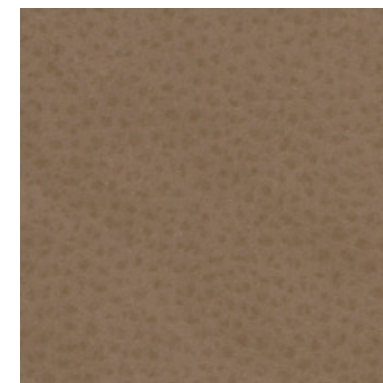
MAYA 450



MAYA 750



MAYA 791



MAYA 950

INFORMAZIONI TECNICHE / TECHNICAL INFORMATION

Composizione / composition	30% CO - 2% PU - 68% PVC
Martindale / martindale	>50.000 cicli/cycles
Pilling / Pilling	-

MANUTENZIONE / MAINTENANCE

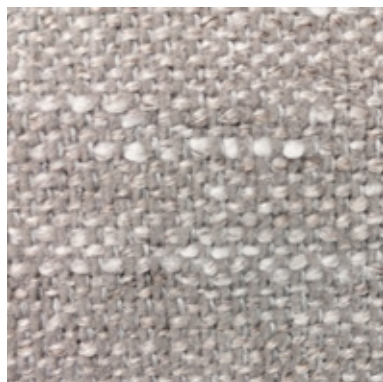


CAT. M

Martin



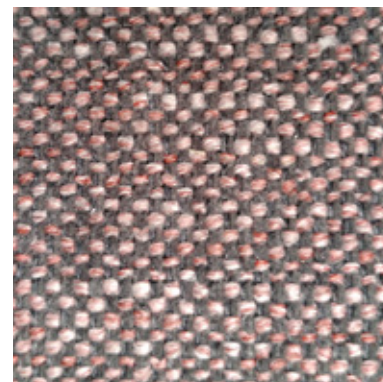
MARTIN 101



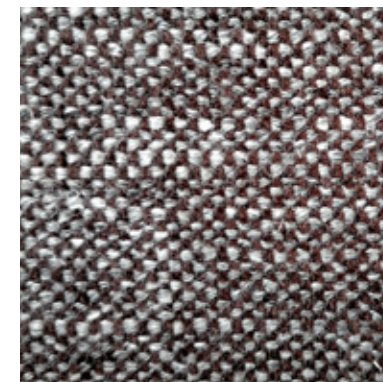
MARTIN 102



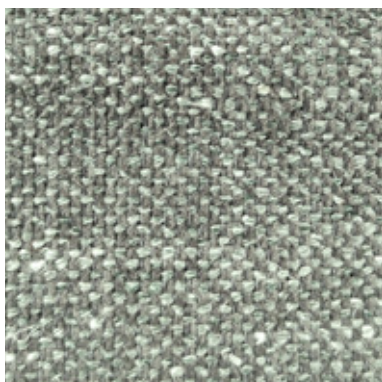
MARTIN 103



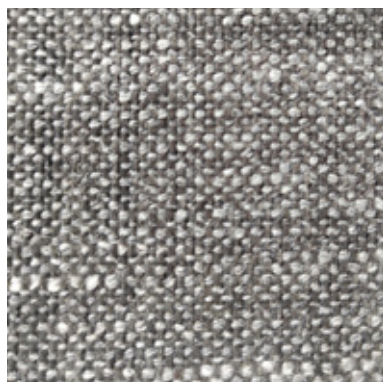
MARTIN 104



MARTIN 105



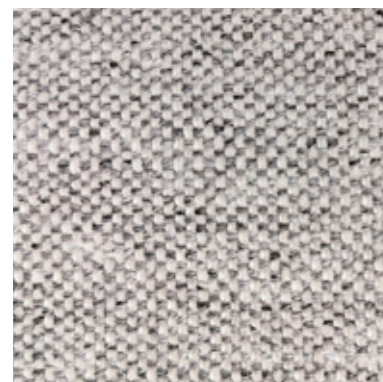
MARTIN 106



MARTIN 107



MARTIN 108



MARTIN 109

INFORMAZIONI TECNICHE / TECHNICAL INFORMATION

Composizione / composition	28% PL - 23% LI - 14% WO - 13% CO - 9% VI - 7% PA - 5% PC
Martindale / martindale	50.000 cicli/cycles
Pilling / Pilling	4

MANUTENZIONE / MAINTENANCE



CAT. M

Manhattan



MANHATTAN 001



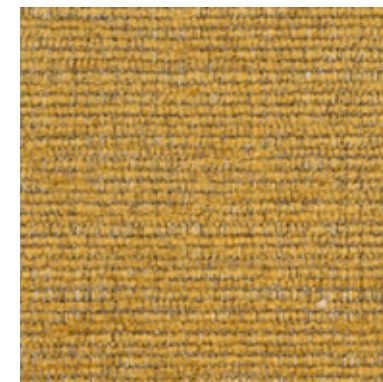
MANHATTAN 002



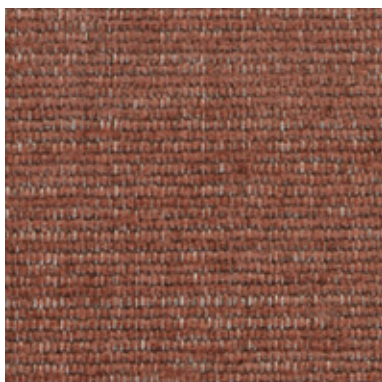
MANHATTAN 009



MANHATTAN 012



MANHATTAN 017



MANHATTAN 019



MANHATTAN 020



MANHATTAN 021



MANHATTAN 102



MANHATTAN 103

INFORMAZIONI TECNICHE / TECHNICAL INFORMATION

Composizione / composition	50% PL - 27% PC - 9% CO - 7% LI - 7% VI
Martindale / martindale	25.000 cicli/cycles
Pilling / Pilling	5

MANUTENZIONE / MAINTENANCE

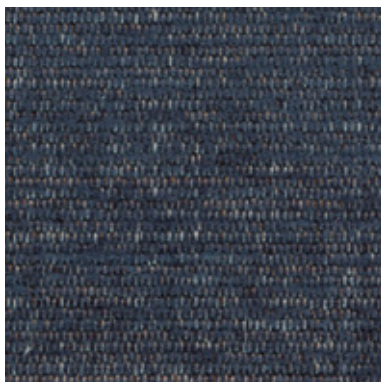


CAT. M

Manhattan



MANHATTAN 104

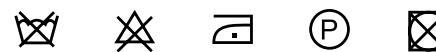


MANHATTAN 105

INFORMAZIONI TECNICHE / TECHNICAL INFORMATION

Composizione / composition	50% PL - 27% PC - 9% CO - 7% LI - 7% VI
Martindale / martindale	25.000 cicli/cycles
Pilling / Pilling	5

MANUTENZIONE / MAINTENANCE

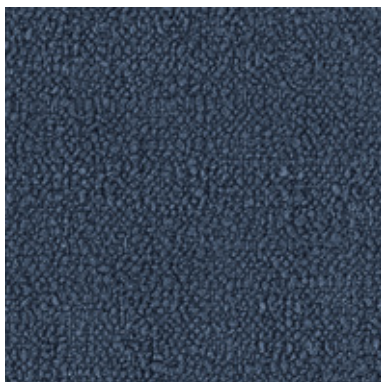


CAT. L

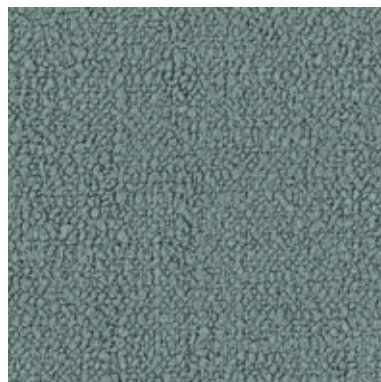
Lounge



LOUNGE 310



LOUNGE 315



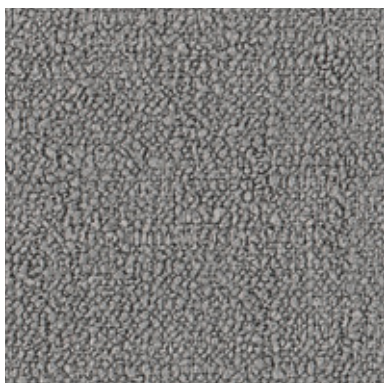
LOUNGE 319



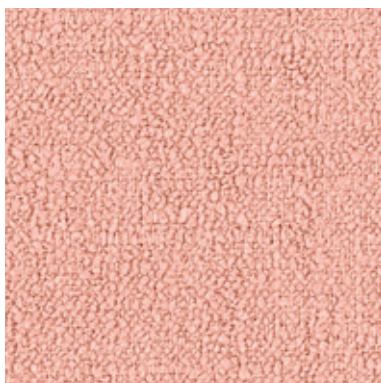
LOUNGE 325



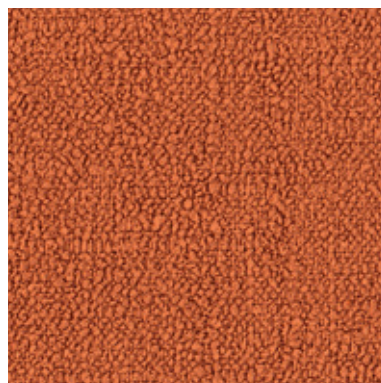
LOUNGE 331



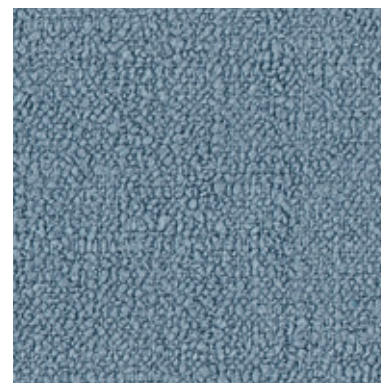
LOUNGE 332



LOUNGE 335



LOUNGE 348



LOUNGE 353



LOUNGE 357

INFORMAZIONI TECNICHE / TECHNICAL INFORMATION

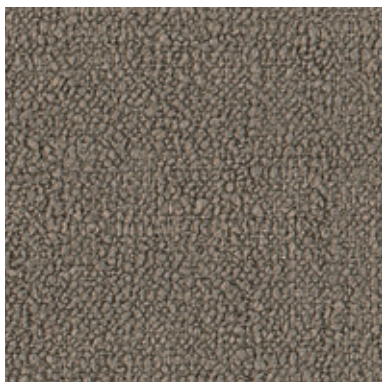
Composizione / composition	100% PL
Martindale / martindale	30.000 cicli/cycles
Pilling / Pilling	4

MANUTENZIONE / MAINTENANCE

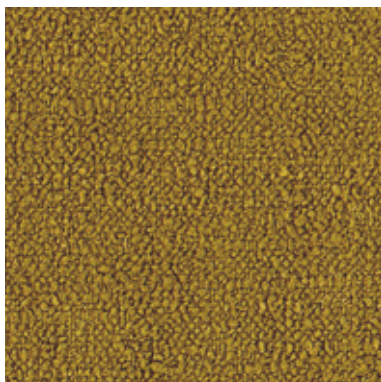


CAT. L

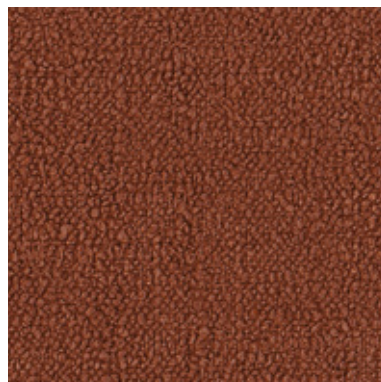
Lounge



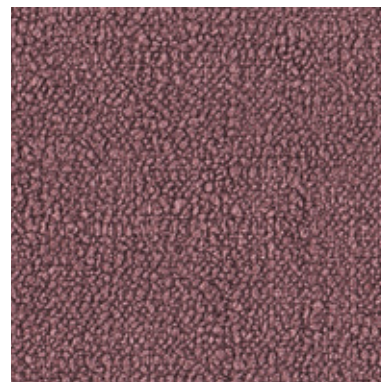
LOUNGE 376



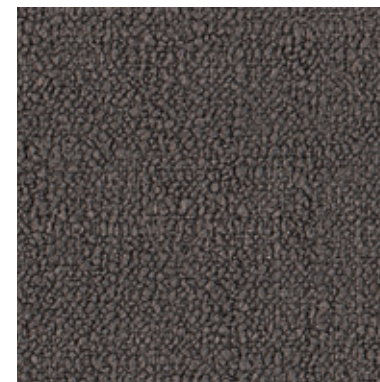
LOUNGE 381



LOUNGE 388



LOUNGE 392

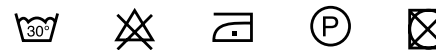


LOUNGE 394

INFORMAZIONI TECNICHE / TECHNICAL INFORMATION

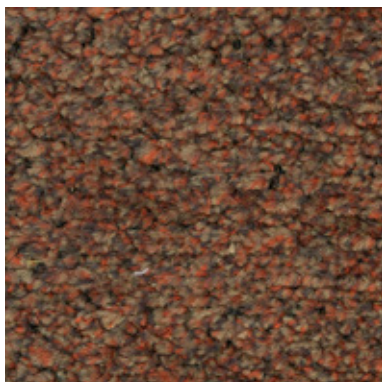
Composizione / composition	100% PL
Martindale / martindale	30.000 cicli/cycles
Pilling / Pilling	4

MANUTENZIONE / MAINTENANCE



CAT. L

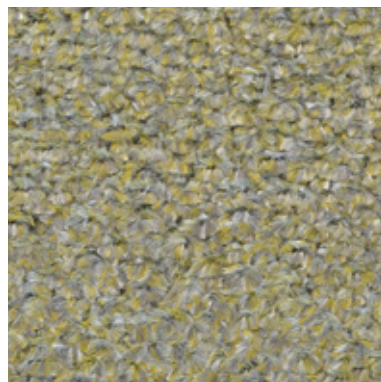
Lolita



LOLITA 105



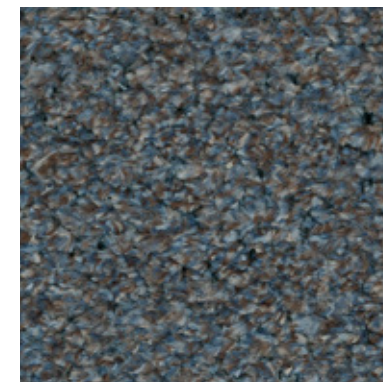
LOLITA 125



LOLITA 129



LOLITA 131



LOLITA 133



LOLITA 134



LOLITA 153



LOLITA 159

INFORMAZIONI TECNICHE / TECHNICAL INFORMATION

Composizione / composition	100% PL
Martindale / martindale	40.000 cicli/cycles
Pilling / Pilling	4

MANUTENZIONE / MAINTENANCE



CAT. L

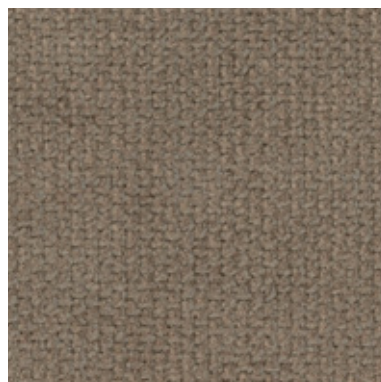
Logan



LOGAN 001



LOGAN 002



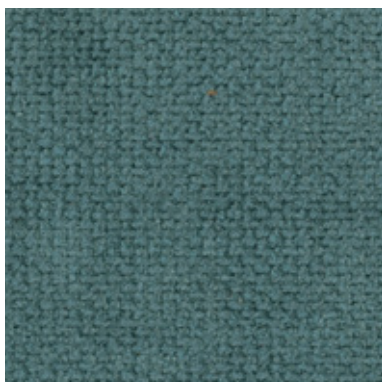
LOGAN 004



LOGAN 006



LOGAN 011



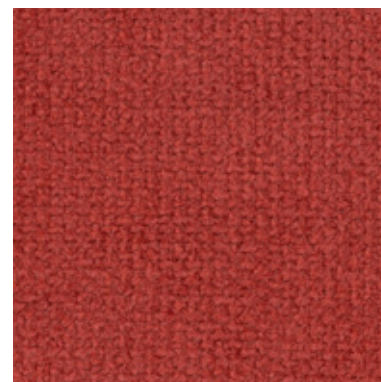
LOGAN 012



LOGAN 014



LOGAN 015



LOGAN 019



LOGAN 020

INFORMAZIONI TECNICHE / TECHNICAL INFORMATION

Composizione / composition	100% PL
Martindale / martindale	100.000 cicli/cycles
Pilling / Pilling	5

MANUTENZIONE / MAINTENANCE

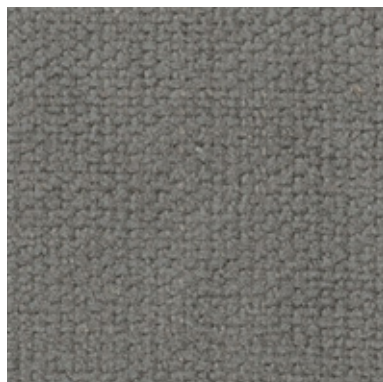


CAT. L

Logan



LOGAN 021



LOGAN 022



LOGAN 025



LOGAN 026

INFORMAZIONI TECNICHE / TECHNICAL INFORMATION

Composizione / composition	100% PL
Martindale / martindale	100.000 cicli/cycles
Pilling / Pilling	5

MANUTENZIONE / MAINTENANCE



CAT. L

Link



LINK 001



LINK 002



LINK 003



LINK 004



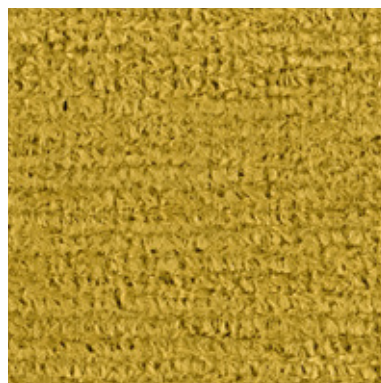
LINK 005



LINK 007



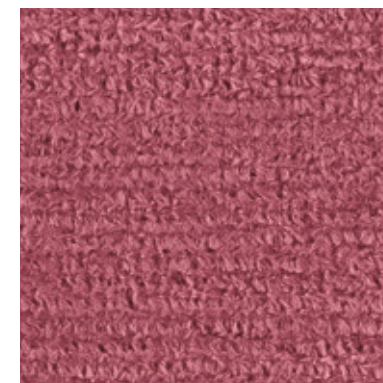
LINK 008



LINK 010



LINK 015

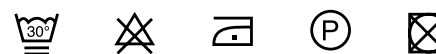


LINK 016

INFORMAZIONI TECNICHE / TECHNICAL INFORMATION

Composizione / composition	97% PL - 3% VI
Martindale / martindale	30.000 cicli/cycles
Pilling / Pilling	4

MANUTENZIONE / MAINTENANCE

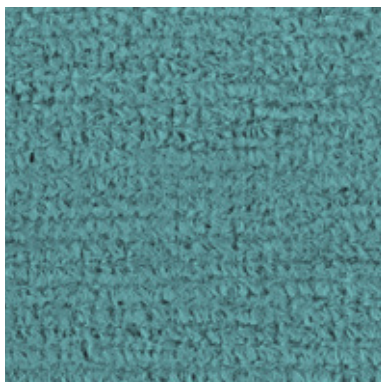


CAT. L

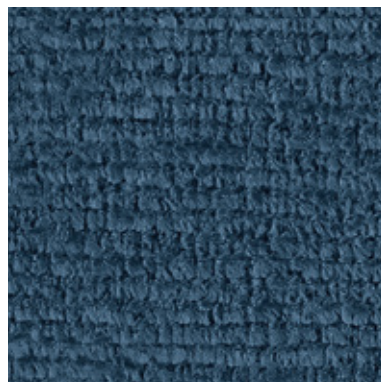
Link



LINK 020



LINK 022



LINK 025



LINK 028

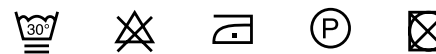


LINK 033

INFORMAZIONI TECNICHE / TECHNICAL INFORMATION

Composizione / composition	97% PL - 3% VI
Martindale / martindale	30.000 cicli/cycles
Pilling / Pilling	4

MANUTENZIONE / MAINTENANCE

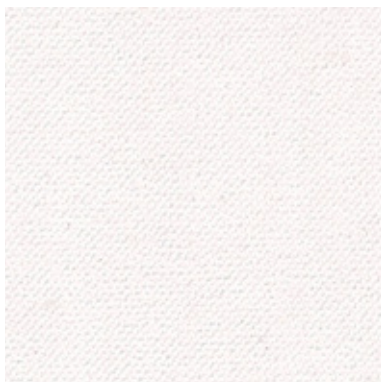


CAT. L

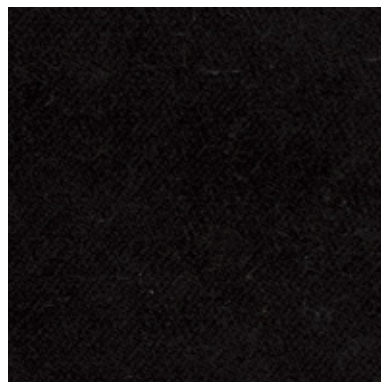
Like



LIKE 002



LIKE 111



LIKE 200



LIKE 301



LIKE 303



LIKE 304



LIKE 307



LIKE 402




LIKE 404





LIKE 405

INFORMAZIONI TECNICHE / TECHNICAL INFORMATION

Composizione / composition	100% PL
Martindale / martindale	100.000 cicli/cycles
Pilling / Pilling	4

 **anallergico**
hypoallergenic

 **irrestringibile**
non-shrink

 **antimacchia**
stain resistant

MANUTENZIONE / MAINTENANCE



CAT. L

Like



LIKE 408



LIKE 600



LIKE 601



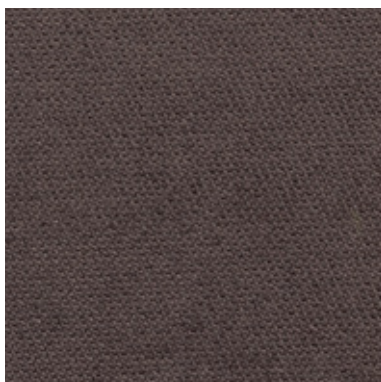
LIKE 602



LIKE 603



LIKE 604



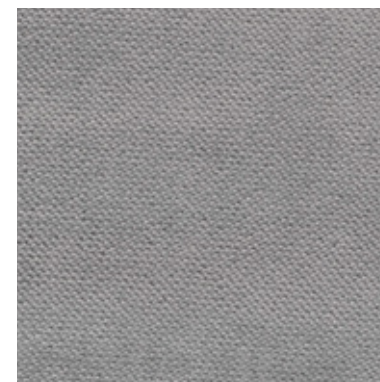
LIKE 605



LIKE 700




LIKE 702





LIKE 704

INFORMAZIONI TECNICHE / TECHNICAL INFORMATION

Composizione / composition	100% PL
Martindale / martindale	100.000 cicli/cycles
Pilling / Pilling	4

 **anallergico**
hypoallergenic

 **irrestringibile**
non-shrink

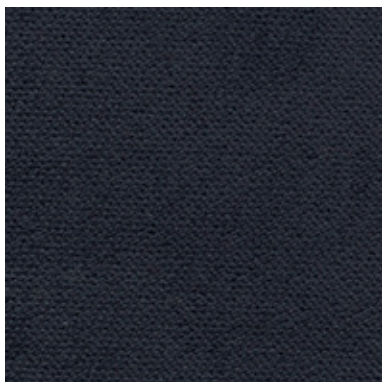
 **antimacchia**
stain resistant

MANUTENZIONE / MAINTENANCE

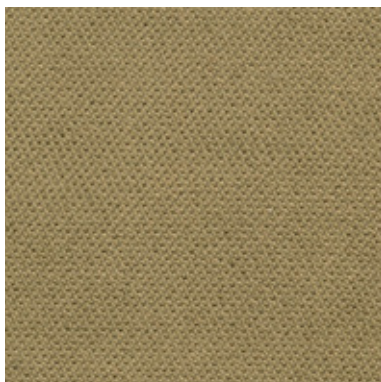


CAT. L

Like



LIKE 705




LIKE 801





LIKE 804

INFORMAZIONI TECNICHE / TECHNICAL INFORMATION

Composizione / composition	100% PL
Martindale / martindale	100.000 cicli/cycles
Pilling / Pilling	4

 **anallergico**
hypoallergenic

 **irrestringibile**
non-shrink

 **antimacchia**
stain resistant

MANUTENZIONE / MAINTENANCE



CAT. L

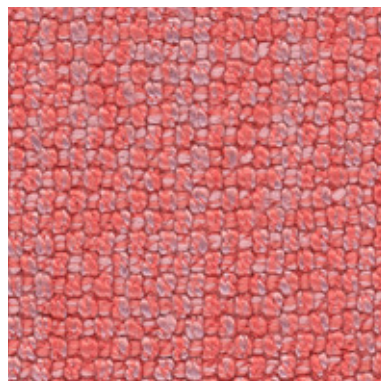
Lewis



LEWIS 102



LEWIS 201



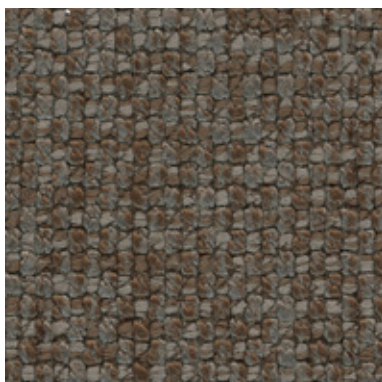
LEWIS 315



LEWIS 400



LEWIS 403



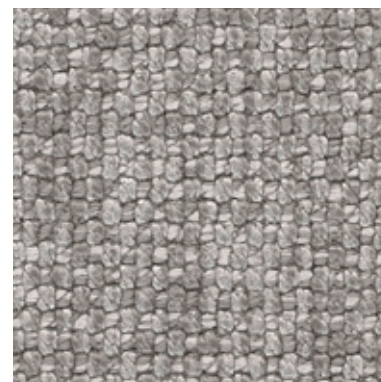
LEWIS 405



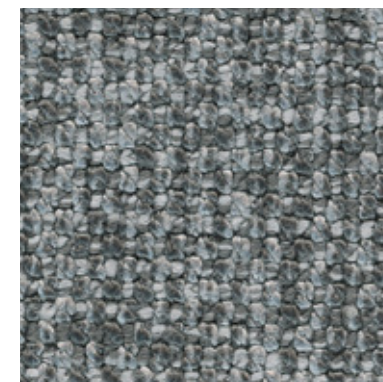
LEWIS 411



LEWIS 503



LEWIS 600



LEWIS 601

INFORMAZIONI TECNICHE / TECHNICAL INFORMATION

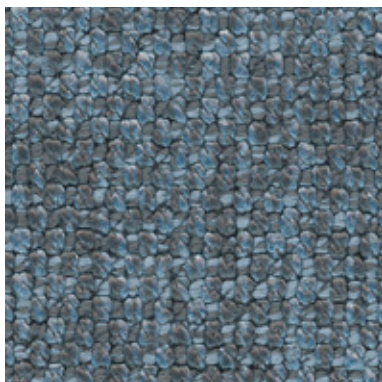
Composizione / composition	57% PL - 43% VI
Martindale / martindale	100.000 cicli/cycles
Pilling / Pilling	4

MANUTENZIONE / MAINTENANCE



CAT. L

Lewis



LEWIS 705



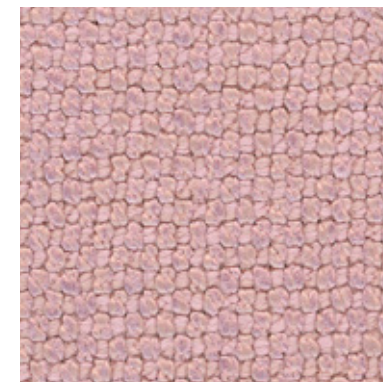
LEWIS 714



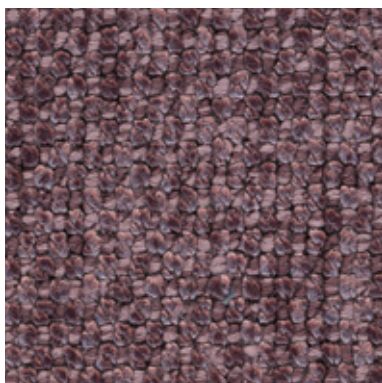
LEWIS 800



LEWIS 802



LEWIS 900



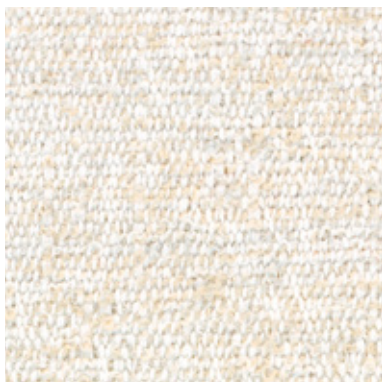
LEWIS 905

INFORMAZIONI TECNICHE / TECHNICAL INFORMATION

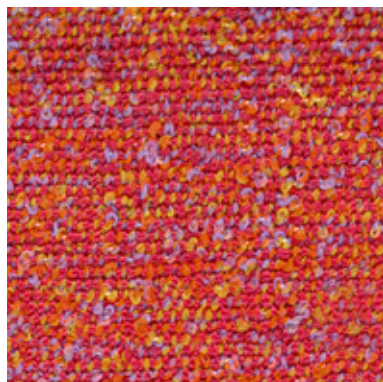
Composizione / composition	57% PL - 43% VI
Martindale / martindale	100.000 cicli/cycles
Pilling / Pilling	4

MANUTENZIONE / MAINTENANCE

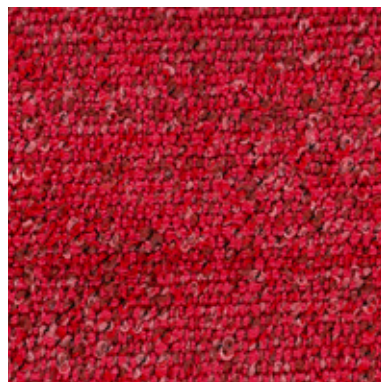




EVERGREEN 101



EVERGREEN 304



EVERGREEN 305



EVERGREEN 400



EVERGREEN 600



EVERGREEN 603



EVERGREEN 605



EVERGREEN 611



EVERGREEN 701



EVERGREEN 802

INFORMAZIONI TECNICHE / TECHNICAL INFORMATION

Composizione / composition	100% PP
Martindale / martindale	50.000 cicli/cycles
Pilling / Pilling	4



Eco-friendly

anallergico
hypoallergenicirrestringibile
non-shrinkidrorepellente
water repellent

MANUTENZIONE / MAINTENANCE





EVERGREEN 806





EVERGREEN 900


INFORMAZIONI TECNICHE / TECHNICAL INFORMATION

Composizione / composition	100% PP
Martindale / martindale	50.000 cicli/cycles
Pilling / Pilling	4

 **Eco-friendly**

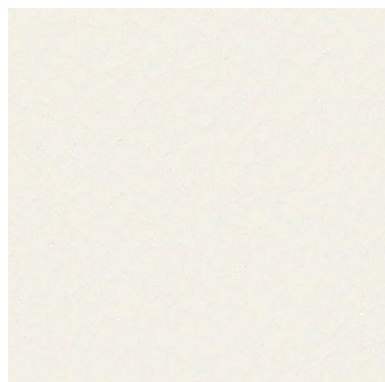
 **anallergico**
hypoallergenic

 **irrestringibile**
non-shrink

 **idrorepellente**
water repellent

MANUTENZIONE / MAINTENANCE





EVEREST 002



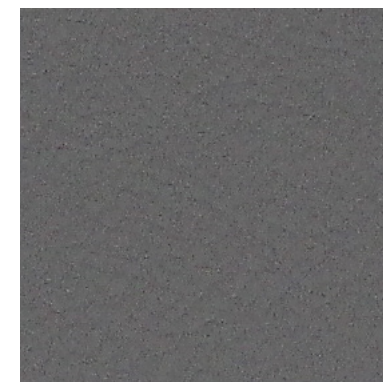
EVEREST 004



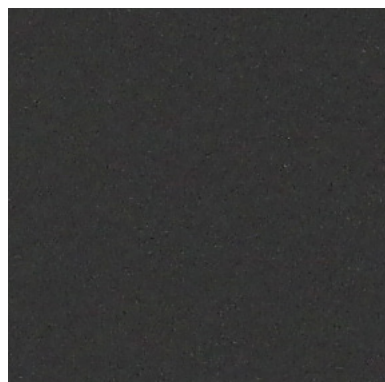
EVEREST 005



EVEREST 006



EVEREST 007



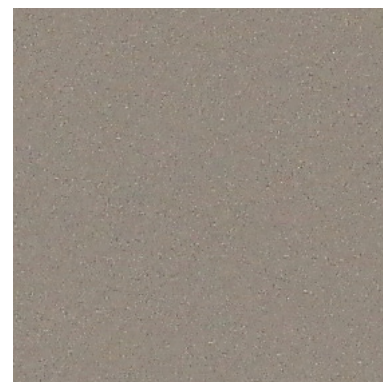
EVEREST 008



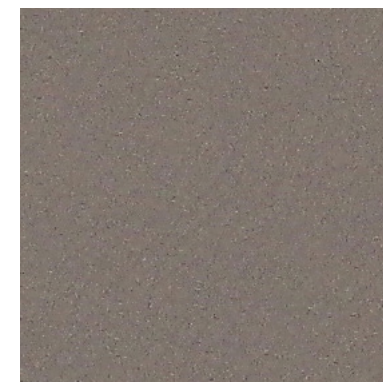
EVEREST 009



EVEREST 011



EVEREST 014



EVEREST 015

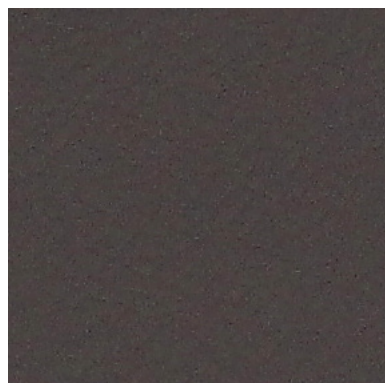
INFORMAZIONI TECNICHE / TECHNICAL INFORMATION

Composizione / composition	85% PVC - 15% PU
Martindale / martindale	50.000 cicli/cycles
Pilling / Pilling	-

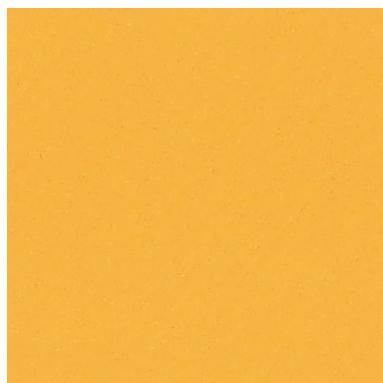
MANUTENZIONE / MAINTENANCE

SIMILPELLE CAT. E

Everest



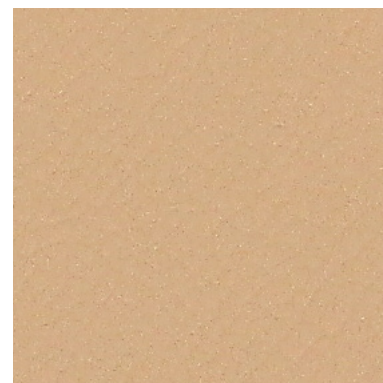
EVEREST 016



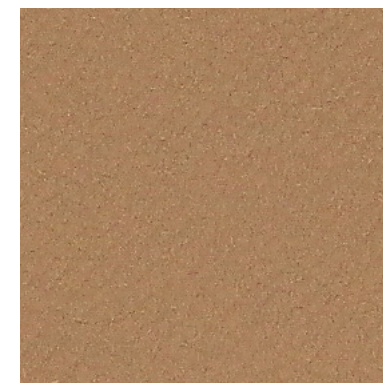
EVEREST 017



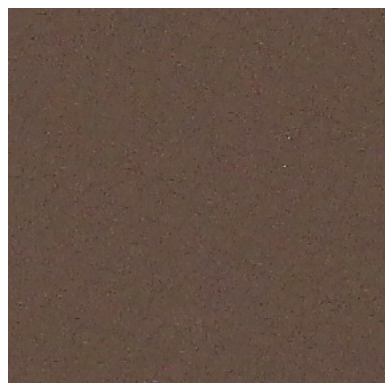
EVEREST 026



EVEREST 029



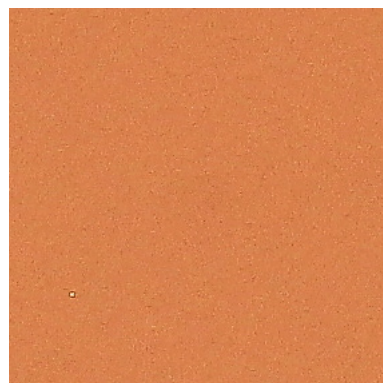
EVEREST 030



EVEREST 031



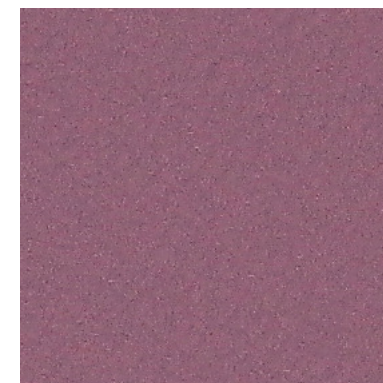
EVEREST 035



EVEREST 037



EVEREST 040



EVEREST 043

INFORMAZIONI TECNICHE / TECHNICAL INFORMATION

Composizione / composition	85% PVC - 15% PU
Martindale / martindale	50.000 cicli/cycles
Pilling / Pilling	-

MANUTENZIONE / MAINTENANCE



SIMILPELLE CAT. E

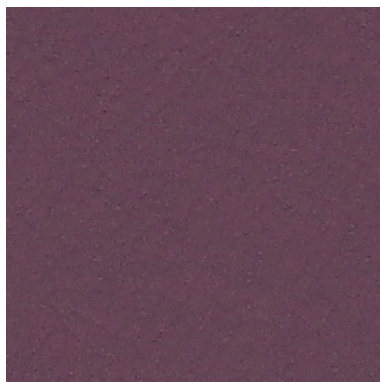
Everest



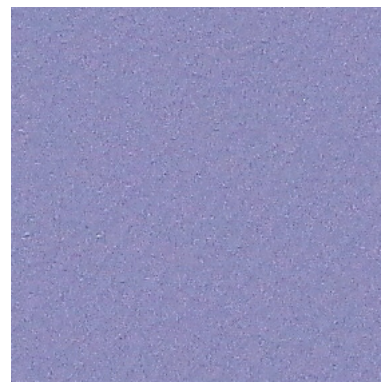
EVEREST 045



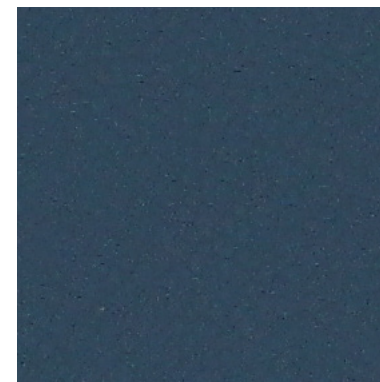
EVEREST 046



EVEREST 048



EVEREST 051



EVEREST 055

INFORMAZIONI TECNICHE / TECHNICAL INFORMATION

Composizione / composition	85% PVC - 15% PU
Martindale / martindale	50.000 cicli/cycles
Pilling / Pilling	-

MANUTENZIONE / MAINTENANCE



CAT. E

Even



EVEN 003



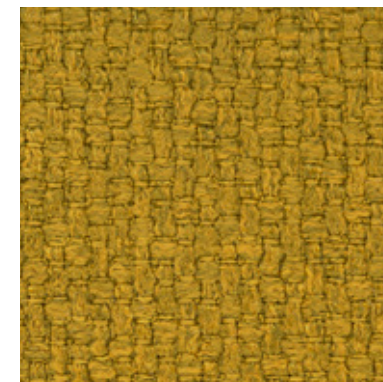
EVEN 111



EVEN 300



EVEN 408



EVEN 503



EVEN 600



EVEN 604



EVEN 608



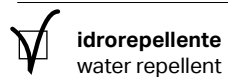
EVEN 609



EVEN 610

INFORMAZIONI TECNICHE / TECHNICAL INFORMATION

Composizione / composition	100% PL
Martindale / martindale	50.000 cicli/cycles
Pilling / Pilling	4



idrorepellente
water repellent

MANUTENZIONE / MAINTENANCE

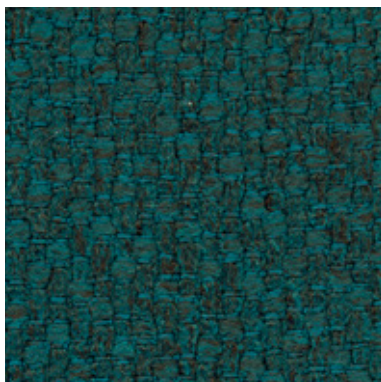


CAT. E

Even



EVEN 705



EVEN 708




EVEN 801



EVEN 901

INFORMAZIONI TECNICHE / TECHNICAL INFORMATION

Composizione / composition	100% PL
Martindale / martindale	50.000 cicli/cycles
Pilling / Pilling	4

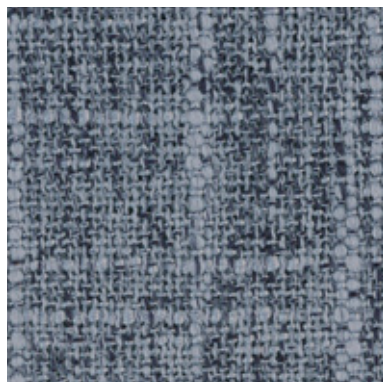
 **idrorepellente**
water repellent

MANUTENZIONE / MAINTENANCE





ERIK 007



ERIK 015



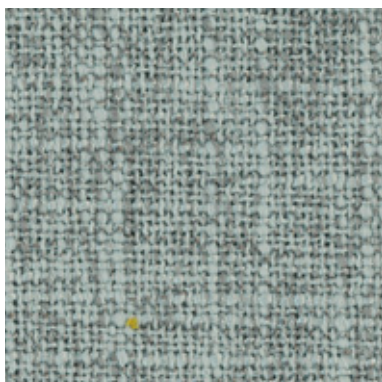
ERIK 018



ERIK 019



ERIK 020



ERIK 021



ERIK 023



ERIK 027



ERIK 130



ERIK 001

INFORMAZIONI TECNICHE / TECHNICAL INFORMATION

Composizione / composition	100% PL
Martindale / martindale	30.000 cicli/cycles
Pilling / Pilling	4

MANUTENZIONE / MAINTENANCE





ERIK 205



ERIK 616

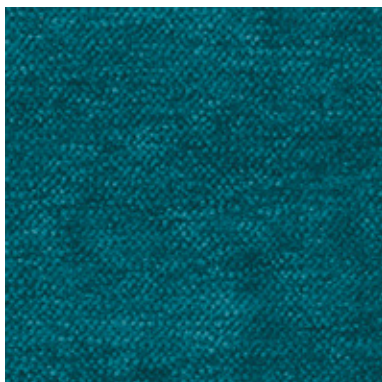
INFORMAZIONI TECNICHE / TECHNICAL INFORMATION

Composizione / composition	100% PL
Martindale / martindale	30.000 cicli/cycles
Pilling / Pilling	4

MANUTENZIONE / MAINTENANCE

CAT. E

Enter



ENTER 006



ENTER 009



ENTER 013



ENTER 020



ENTER 024



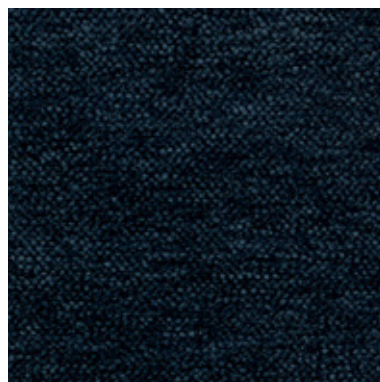
ENTER 025



ENTER 030



ENTER 037



ENTER 041

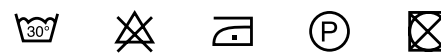


ENTER 044

INFORMAZIONI TECNICHE / TECHNICAL INFORMATION

Composizione / composition	100% PL
Martindale / martindale	40.000 cicli/cycles
Pilling / Pilling	4

MANUTENZIONE / MAINTENANCE



CAT. E

Enter



ENTER 057



ENTER 059



ENTER 062



ENTER 074



ENTER 100



ENTER 101

INFORMAZIONI TECNICHE / TECHNICAL INFORMATION

Composizione / composition	100% PL
Martindale / martindale	40.000 cicli/cycles
Pilling / Pilling	4

MANUTENZIONE / MAINTENANCE



CAT. E

Emery



EMERY 07



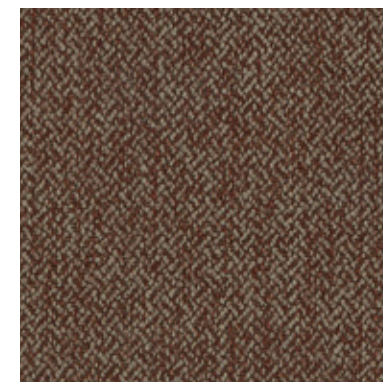
EMERY 21



EMERY 24



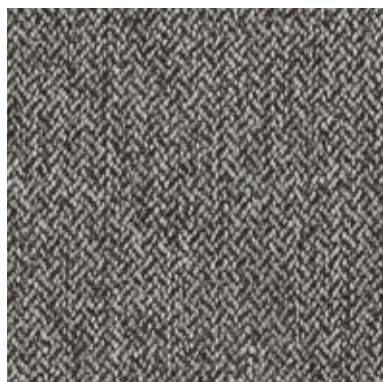
EMERY 25



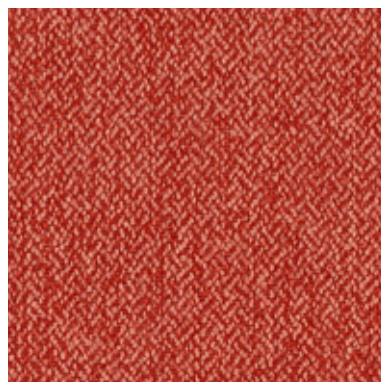
EMERY 30



EMERY 31



EMERY 37



EMERY 44




EMERY 53



EMERY 62

INFORMAZIONI TECNICHE / TECHNICAL INFORMATION

Composizione / composition	100% PL
Martindale / martindale	40.000 cicli/cycles
Pilling / Pilling	4

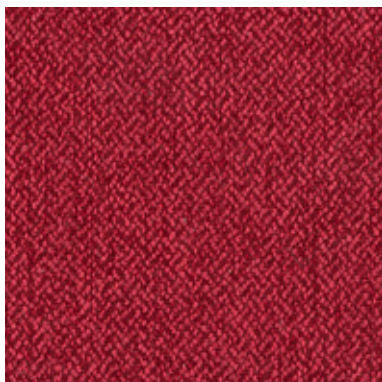
 **idrorepellente**
water repellent

MANUTENZIONE / MAINTENANCE



CAT. E

Emery




EMERY 70



EMERY 74

INFORMAZIONI TECNICHE / TECHNICAL INFORMATION

Composizione / composition	100% PL
Martindale / martindale	40.000 cicli/cycles
Pilling / Pilling	4

 **idrorepellente**
water repellent

MANUTENZIONE / MAINTENANCE

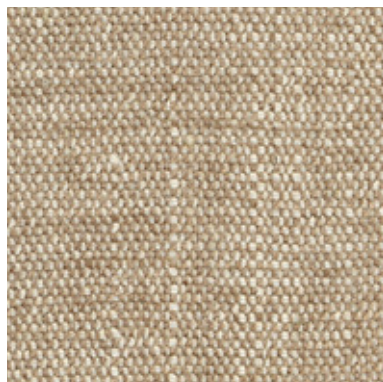


CAT. E

Easy care



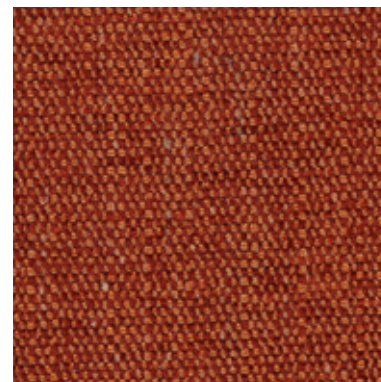
EASY CARE 001



EASY CARE 002



EASY CARE 003



EASY CARE 006



EASY CARE 007



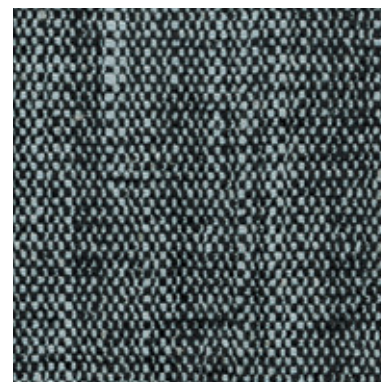
EASY CARE 008



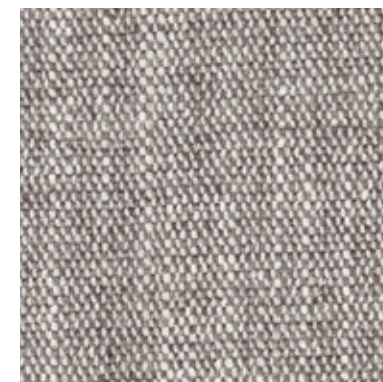
EASY CARE 010



EASY CARE 012




EASY CARE 013





EASY CARE 015

INFORMAZIONI TECNICHE / TECHNICAL INFORMATION

Composizione / composition	70% PL - 30% LI
Martindale / martindale	50.000 cicli/cycles
Pilling / Pilling	5

 **idrorepellente**
water repellent

 **irrestringibile**
non-shrink

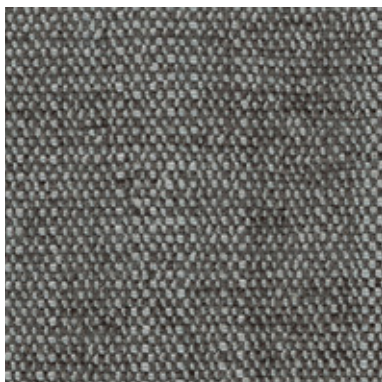
 **antimacchia**
stain resistant

MANUTENZIONE / MAINTENANCE



CAT. E

Easy care




EASY CARE 016





EASY CARE 017

INFORMAZIONI TECNICHE / TECHNICAL INFORMATION

Composizione / composition	70% PL - 30% LI
Martindale / martindale	50.000 cicli/cycles
Pilling / Pilling	5

 **idrorepellente**
water repellent

 **irrestringibile**
non-shrink

 **antimacchia**
stain resistant

MANUTENZIONE / MAINTENANCE



CAT. A

After



AFTER 011



AFTER 033



AFTER 043



AFTER 045



AFTER 060



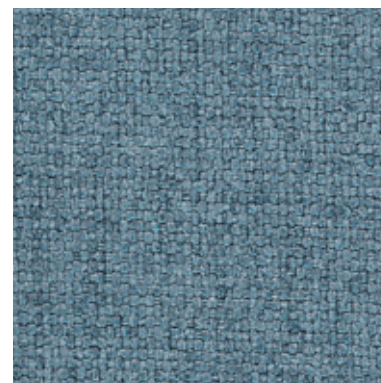
AFTER 061



AFTER 063



AFTER 064




AFTER 076



AFTER 084

INFORMAZIONI TECNICHE / TECHNICAL INFORMATION

Composizione / composition	100% PL
Martindale / martindale	60.000 cicli/cycles
Pilling / Pilling	5

 **idrorepellente**
water repellent

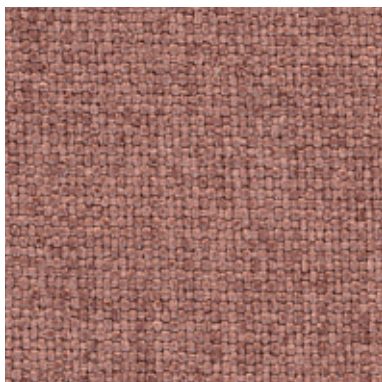
 **irrestringibile**
non-shrink

MANUTENZIONE / MAINTENANCE



CAT. A


After




AFTER 095

INFORMAZIONI TECNICHE / TECHNICAL INFORMATION

Composizione / composition	100% PL
Martindale / martindale	60.000 cicli/cycles
Pilling / Pilling	5

 **idrorepellente**
water repellent

 **irrestringibile**
non-shrink

MANUTENZIONE / MAINTENANCE

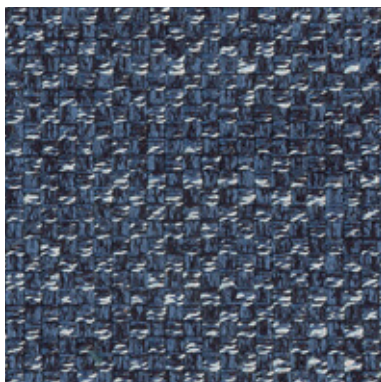


CAT. A

Adria



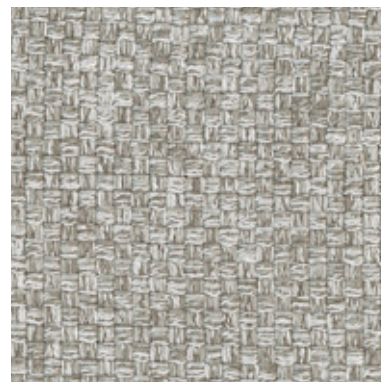
ADRIA 207



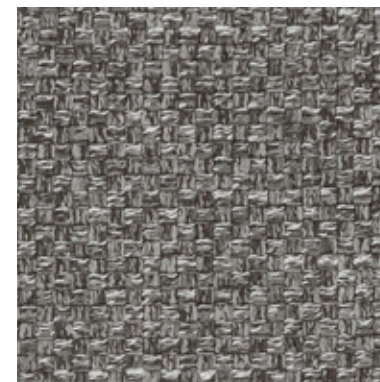
ADRIA 215



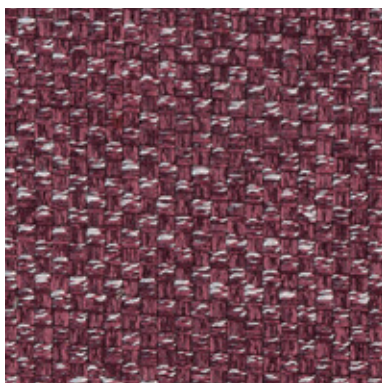
ADRIA 225



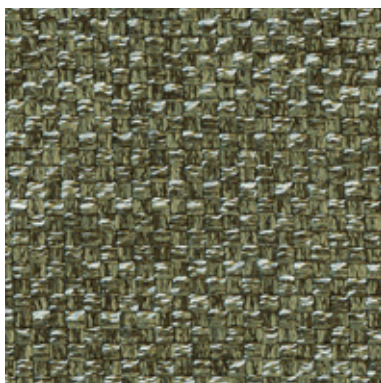
ADRIA 231



ADRIA 232



ADRIA 245



ADRIA 262




ADRIA 275



ADRIA 284

INFORMAZIONI TECNICHE / TECHNICAL INFORMATION

Composizione / composition	70% PL - 30% VI
Martindale / martindale	30.000 cicli/cycles
Pilling / Pilling	4

 **idrorepellente**
water repellent

MANUTENZIONE / MAINTENANCE



DITRE
ITALIA

31016 Cordignano (Treviso) Zona Industriale Via del Lavoro, 21
Tel. +39.0438.9999 Fax +39.0438.999993 www.ditreitalia.it info@ditreitalia.it

